

MODULE 5: FUNCTION 3 COMMUNICATION FOR ACTION

SESSION 5.1 PROTOCOL 3.1 ADHERE TO MAPPING STANDARDS

Outline

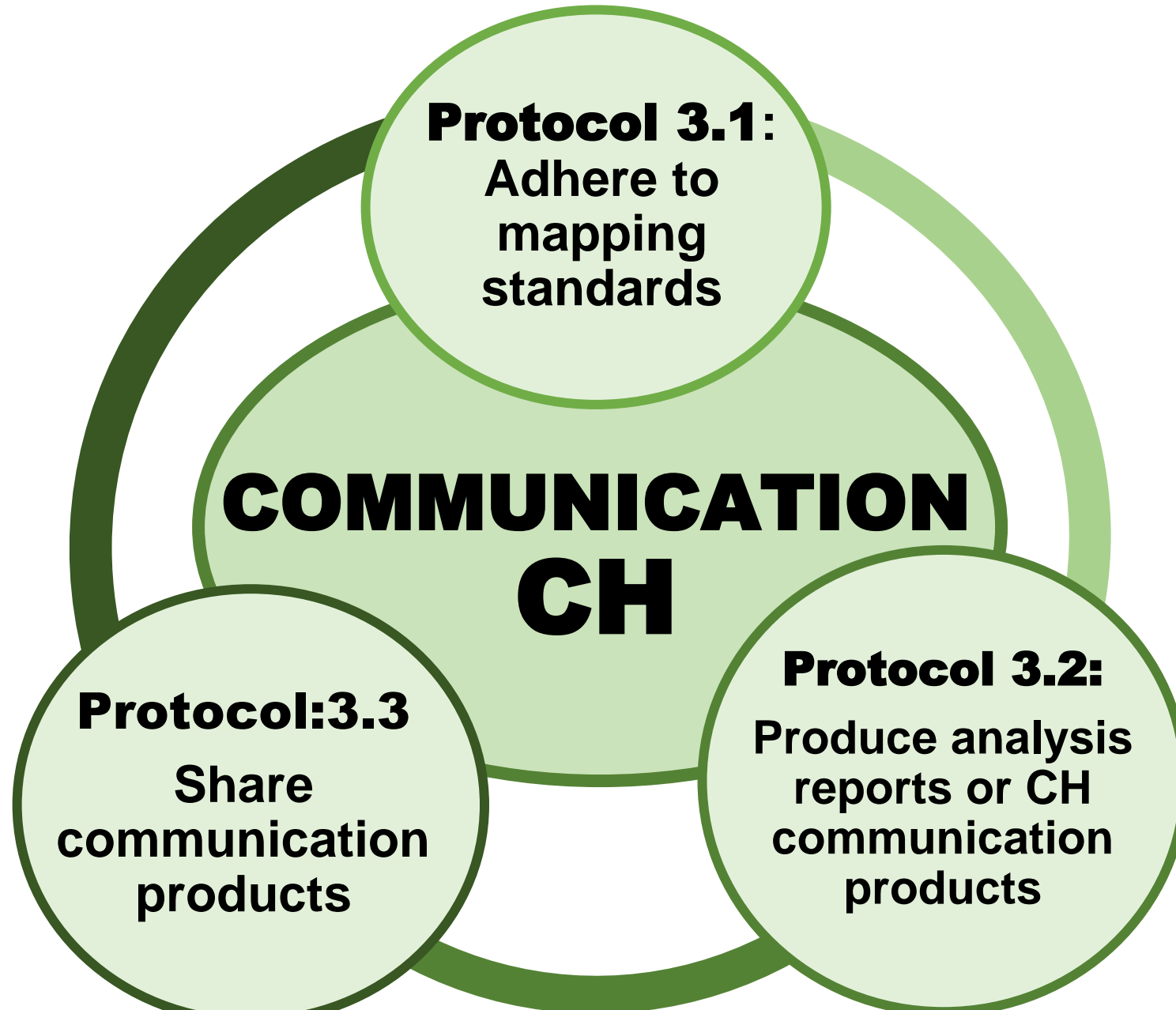
- OBJECTIVES
- INTRODUCTION TO MODULE 5
- PURPOSE OF CH COMMUNICATION
- SOME GENERAL CONSIDERATIONS ON COMMUNICATION
- PROTOCOL 3.1 ADHERE TO MAPPING STANDARDS
- PICTOGRAMS USED
- SOME GENERAL CONSIDERATIONS ON COMMUNICATION

SESSION OBJECTIVES

At the end of the session, participants:

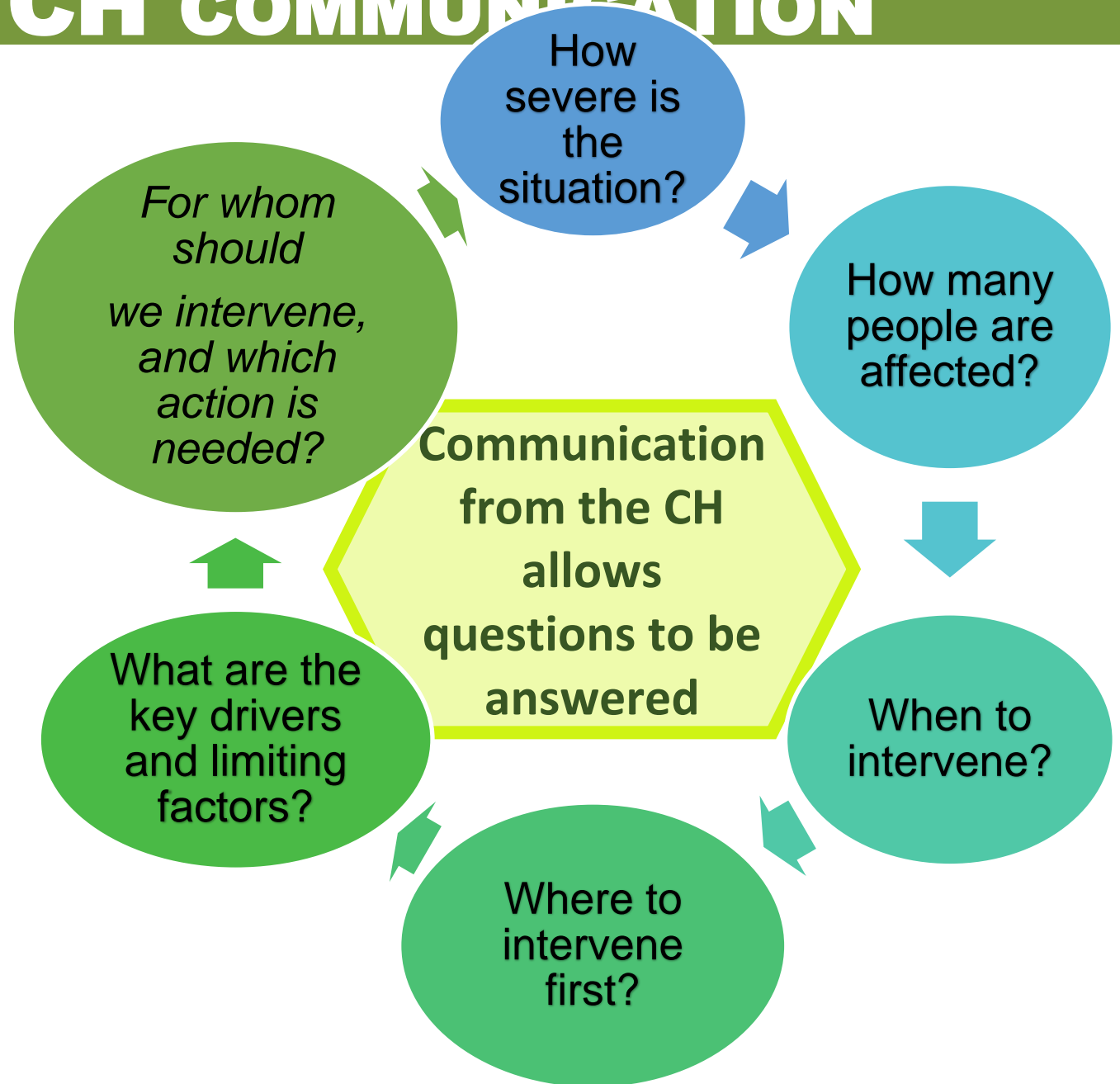
- understood the usefulness of communication in CH
- mastered cartographic protocols
- Understood the importance of the different CH communication products

INTRODUCTION TO MODULE 5



PURPOSE OF CH COMMUNICATION

Provide to key decision makers **the key findings** of CH analysis in a coherent and accessible way



FEW GENERAL CONSIDERATIONS ON COMMUNICATION

Good editorial style

- Use active voice
- Be exact in word choice (standardized terminologies)
- Pay attention to the turn of phrase
- Be concise, get to the point
- Avoid jargons

Good visuals

- Make clear editing formatting
- Create high resolution maps
- Do not distort the cards
- Use CH communication models
- Make adequate graphs
- Respect the CH color codes

Writing Tips

- Review grammar
- Review technical conclusions
- Do peer review



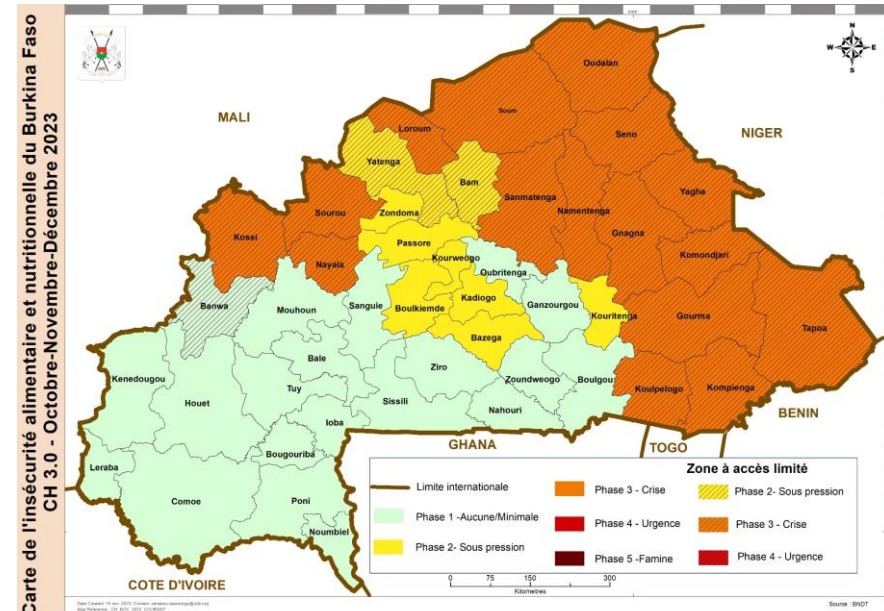
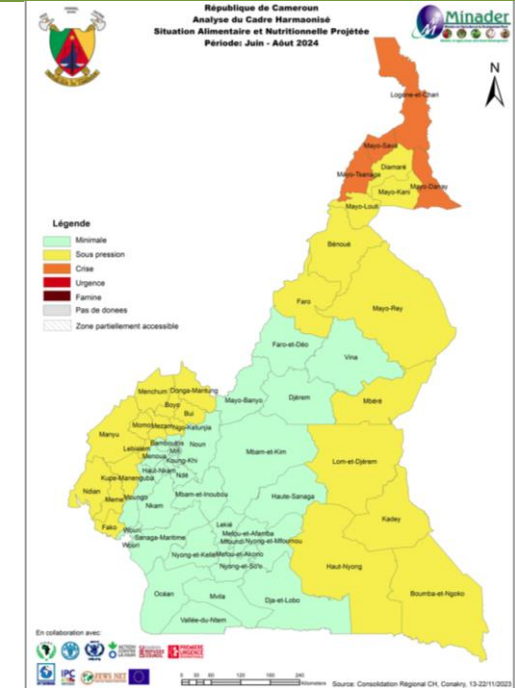
PROTOCOL 3.1 ADHERE TO MAPPING STANDARDS

- The maps are produced after the classification of the zones
- Strictly comply with CH color standards
- Color codes for mapping




Phase	R	G	B
Non analysée	166	166	166
Phase 1-Aucun/Minimale	205	250	205
Phase 2-Sous-pression	250	230	030
Phase 3-Crise	230	120	000
Phase 4-Urgence	200	000	000
Phase 5-Catastrophe/Famine	100	000	000

➤ Hatch codes in inaccessible areas or limited access

Phase	R	G	B
Phase 1-Aucun/Minimale	205	250	205
Phase 2-Sous-pression	250	230	030
Phase 3-Crise	230	120	000
Phase 4-Urgence	200	000	000
Phase 5-Famine	100	000	000



PICTOGRAMS USED

Confidence level	Criteria for assigning analysis confidence levels
Acceptable 	At least 1 food and nutrition security outcomes
	+
	At least 3 groups of contributing factors
Medium 	At least 2 food and nutrition security outcomes including at least one primary result
	+
	At least 4 groups of contributing factors
High 	At least 3 food and nutrition security results including the two primary outcomes
	+
	5 groups of contributing factors

PICTOGRAMS USED

<p>* ** ***</p>	<p>Confidence level of the analysis</p>
<p>▲</p>	<p>Recurrence of phases 3 or worse during three consecutive years over the same period in the same area</p>
<p>🍷</p>	<p>Area where at least 25% of households receive humanitarian food assistance covering at least 50% of their caloric needs</p>



END

